

Aviv Barley Found in Month 1, 2011 C.E.

Photographs from Israel on Yom Shli-shi, Day 16, Month 1 on Tuesday, March 22, 2011 C.E.

Ripening barley does not determine when a Hebrew Year begins, the **sun** and the **moon** do, according to Genesis 1:14. The rule of the equinox always places Day 15 of Month 1 on or after the Hebrew Day of the spring equinox. Therefore in some years there will be firstfruits Aviv barley after the first half of Month 12, and in some years there will be firstfruits Aviv barley after the first half of Month 1.

There were large amounts of Aviv barley in the Jordan Valley on Day 16 of Month 1 on March 22, 2011 C.E. This wild barley ranged between Soft Dough to Hard Dough, or 85-87 on the Zadoks Scale of cereal grain developmental stages. There is almost always some Aviv barley in Israel by the spring equinox, and the wheat usually begins to be harvested in late April in Israel.



Large field of wild barley south of Beit Shean near the security checkpoint in the Jordan Valley, March 22, 2011 C.E.

Hard dough barley was found which measured 87 on the Zadoks Scale





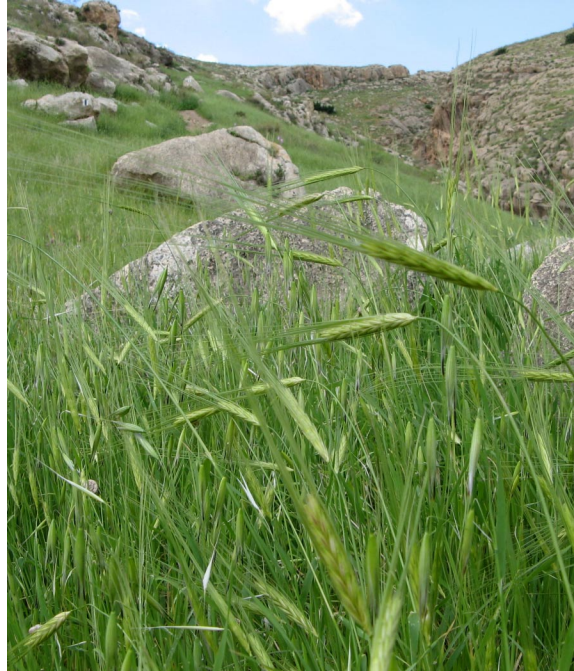
Barley seen in various stages of development in the Jordan Valley on March 22, 2011 C.E. The more developed heads were in Firm Dough to Hard Dough stage (86 and 87 on the Zadoks Scale).



Aviv barley - well developed kernels found on March 22, 2011 C.E. in the Jordan Valley. These kernels have entered the Hard Dough stage or 87 on the Zadoks Scale of cereal grain development.



Firm Dough stage



Jordan Valley on March 22, 2011 C.E.



Soft Dough stage



Firm Dough stage



Soft Dough stage



Firm Dough stage



Firstfruits Aviv barley in the Jordan Valley on March 22, 2011 C.E.

These photographs were taken in the Jordan Valley on Day 16 of Month 1, 2011 C.E. Barley was seen ranging in development from Soft Dough to Hard Dough.

With such plentiful supplies of Hard Dough barley available in Israel on Day 16 of Month 1, it would have been a simple task to supply the omer necessary for the firstfruits offering.



Large field of Aviv wild barley with people in the background for perspective

Aviv wild barley on a popular hiking trail in the Jordan Valley

All of these photographs were taken between 11:00 a.m and 1:00 p.m. on March 22, 2011 C.E. For people who are familiar with wild two-row barley, the pictures speak for themselves. The barley is **not** roadside barley. There are **large amounts** of Aviv barley shown in **various fields**, some in the **hills** and some on the **plains**. The pictures show **plump kernels** of barley that are about to ripen and become hard. The kernels or seeds are **fully formed** and are ready to harden. For additional information about intercalation and developmental stages of barley, refer to the article entitled "When Did Month 1 Begin in 2008 C.E." under the menu item "Creation Calendar Resources" at <http://www.torahcalendar.com>.